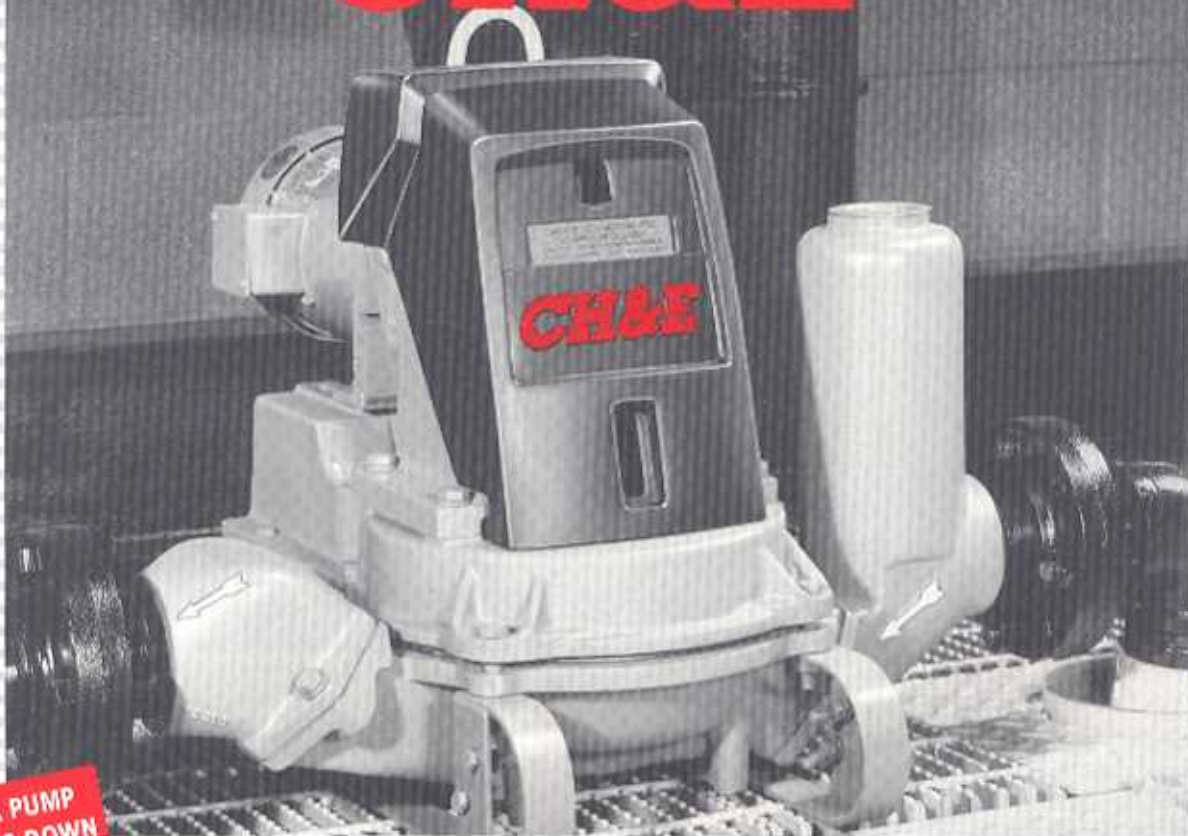


CH&E



**THIS MUCK PUMP
DOESN'T BOG DOWN**

Standard 2" & 3" pumps powered by TEFC or explosion-proof motors. Wetted parts available in aluminum, cast iron, bronze, 316 S.S. or with various coatings. Suction lift to 25'; flow range from 12 to 70 GPM.



MECHANICAL DIAPHRAGM PUMPS FOR INDUSTRY

- AUTO-PRIMES FROM DRY
- RUNS DRY WITHOUT HARM
- WON'T EMULSIFY LIQUIDS
- HANDLES LARGE SOLIDS

CH&E Mechanical Diaphragm Pumps are made to move the muck and messy run-off you collect in a catch basin or transfer tank. If it will flow, chances are these units will move it more quietly and efficiently than air-operated diaphragm pumps, in low head applications. A range of elastomer choices allow use in many difficult applications.



For other power sources such as air motors, hydraulic motors or belt drive from any adequate power source, we offer units without power. We can specify the alternate power source for you, or quote it to you furnished and mounted.

A mechanical variable speed added to these pumps allow you to vary the output to meet changing conditions. Available in 2" or 3" and single phase or three phase versions; on skid or wheels.



AC variable speed controls are available mounted to the pump unit, or shipped separately for remote location mounting. With AC variable speed controls, you can vary the output and reduce energy consumption.

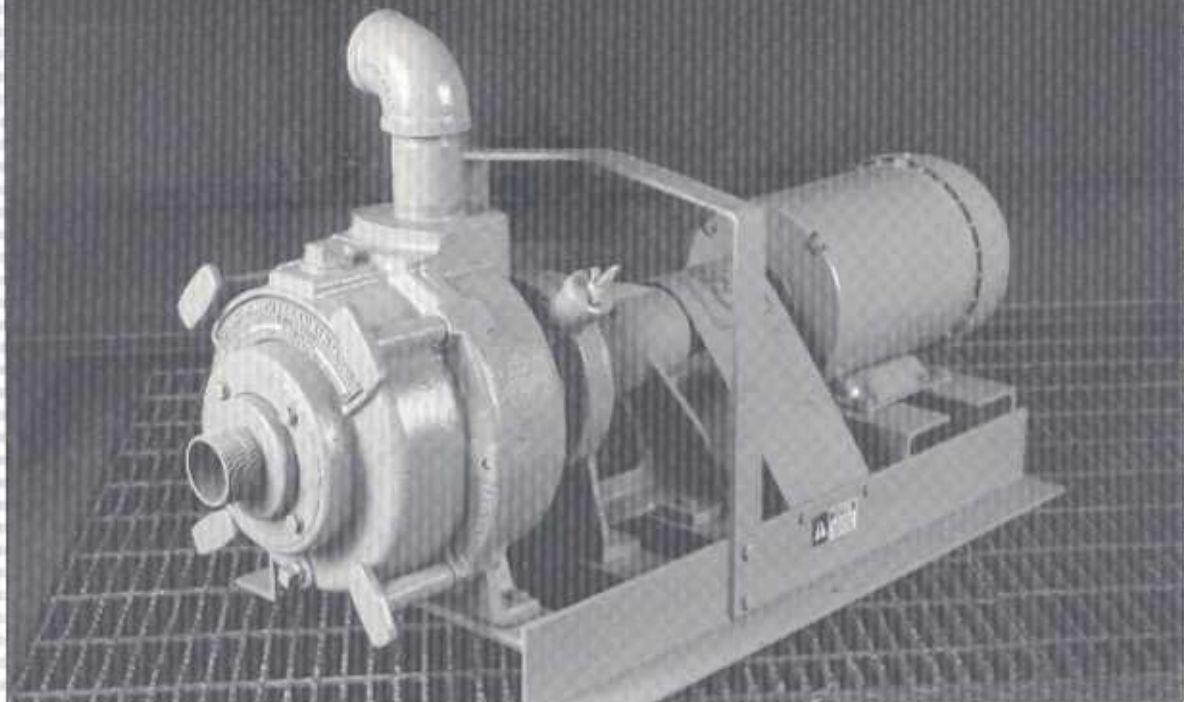


In larger volume applications, our 4" single diaphragm pump will deliver up to 150 GPM and pass solids up to 2 1/2" in diameter. Available only in cast iron with a large choice of elastomer materials.



Maximum volume is achieved with two 4" units side-by-side with suction manifold and (optional) single discharge manifold. These units alternate output with unique "walking beam" design and pass large solids with ease.

SOLIDS HANDLING



ABOVE: These 3200 series long-coupled units are available in 2" or 3" units and produce up to 360 GPM. The heavy-duty units pass up to 1.75" solids and are available in either aluminum or cast iron pump cases.

Available in 1½" and 2" configurations, the 1500 series long-coupled units produce up to 180 GPM and pass up to 1.25" solids. Aluminum case, iron internal parts. Single seal system.



The close-coupled version of the 3200 series is available in 2" or 3" and generates up to 360 GPM. Coupled to JM motors, these units are perfect when space is restricted. Aluminum or cast iron.



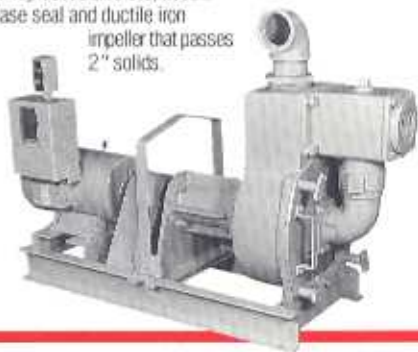
CH&E SELF-PRIMING TRASH PUMPS

- SELF-PRIMING TO 25'
- PASS LARGE SOLIDS
- REPLACEABLE VOLUTES
- LARGE VOLUME, MEDIUM HEAD

Originally designed to withstand the rigors of construction dewatering, CH&E trash pumps are built "total tough." Ranging in size from 1½" to 6", they feature double grease-lubricated shaft seals and nikrome steel shafts. All impellers are ductile iron; every unit is designed with a replaceable volute, rather than being cast into the pump case. Mounting options even include a highway trailer.

MADE
IN THE
U.S.A.

The 2700 series is available as a large 3" or a small 4" unit. They feature very heavy-duty cast iron construction with replaceable volute, double grease seal and ductile iron impeller that passes 2" solids.



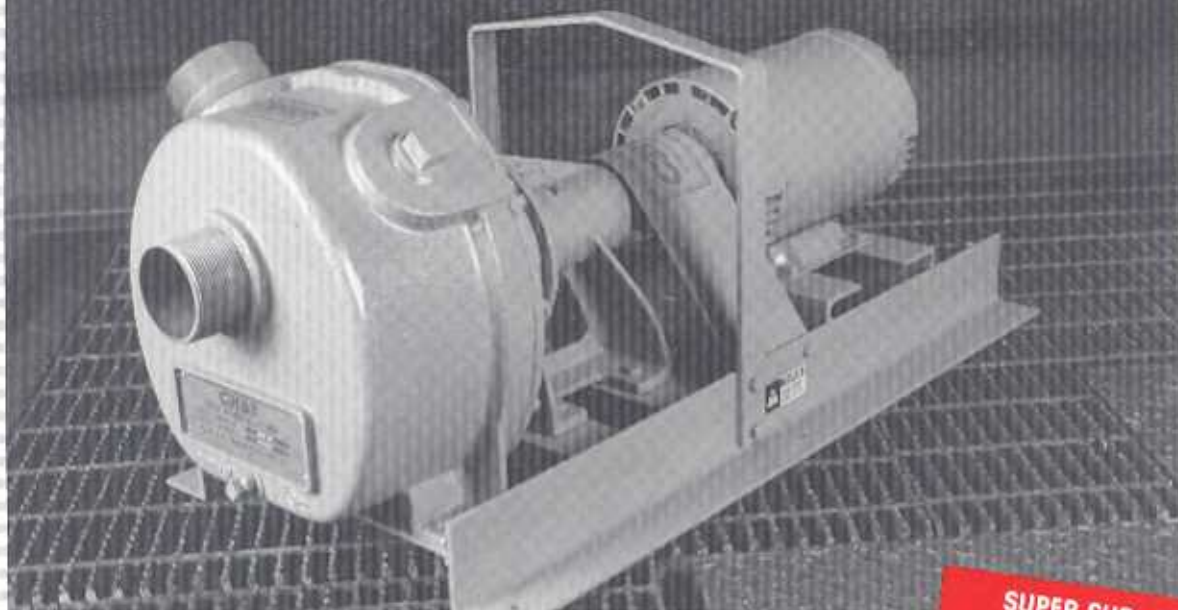
This full size 4" trash pump passes up to 3" solids and can generate 750 GPM. Like the 2700 and 2900 series, the front of the pump case can be removed (for cleaning or repairs) without disturbing suction or discharge pipe.



A large volume trash pump, the 2900 series has 6" suction and discharge. Maximum output is 1400 GPM; shutoff head is 100 feet. Handles solids up to 3". As with all long-coupled units, it's available with or without power on skid, or as a pedestal pump only.



BUILT HEAVY-DUTY



ABOVE: This self-priming is available in 1½", 2" and 3" sizes and comes in low-to-medium head versions and a 2" enclosed impeller high head system. The higher volume units can achieve a flow up to 360 GPM.

These very versatile units have broad applications where a small self-priming is needed. They are widely used as the primary pumps in portable military systems and as feeder pumps in industrial separators. Available in 1", 1½" and 2" sizes.



Close-coupled to JM motors, these units can fill the bill when space restrictions, or application preferences exist. Available in 2" and 3" sizes and a 2" higher head version. Maximum volume up to 360 GPM.



The 4800 and 4900 series are available in 3", 4" and 6" sizes, with a maximum output up to 1420 GPM and heads up to 108 feet. All have double shaft seals, replaceable volutes, and removable front covers for clean out or repair without disturbing piping.



CH&E SELF-PRIMING CENTRIFUGAL PUMPS

- SELF-PRIMING TO 25'
- REPLACEABLE VOLUTES
- SINGLE & DOUBLE SEALS
- BROAD SIZE RANGE

Time-tested as very tough units, CH&E self-priming centrifugals are built to last in rugged dewatering applications. Available in a range of power and sizes, from 1" to 6", we fit many applications where self-priming is needed. Mostly low and medium head models, but some higher head versions are available. Call us with your application.

MADE
IN THE
U.S.A.

SUPER-SUB SUBMERSIBLE PUMPS

- FULL LINE FROM 2" TO 6"; ¾ HP TO 50 HP
- HIGH VOLUME OR HIGH HEAD MODELS
- SLIM PROFILES FIT INTO TIGHT SPACE
- SILICON CARBIDE SHAFT SEALS EXTEND LIFE



A special family of submersible dewatering pumps built to last under rigorous use conditions. And they are designed to fit where others won't. Bodies are hard anodized aluminum to resist corrosion; the shaft and all fasteners are stainless steel, and the shaft seals are oil lubricated. Controllers are available in NEMA 3R or NEMA 4 versions and explosion proof models are available in 2" and 3" sizes. All units perform to CPB standards and are CSA approved.

CH&E

QUALITY PUMPS SINCE 1908

CERTIFIED
PERFORMANCE



CALL
800-236-0666

Here's the industry leader in mechanical diaphragm pumps. Available in 2", 3", 4" and 4" double sizes. Powered by gas or diesel engines, all units have a variety of mounts and options.



A LEADER IN ENGINE POWERED PORTABLE DEWATERING PUMPS

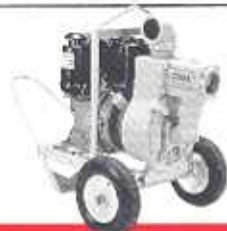
Built to operate in the toughest working conditions, self-priming centrifugals are powered by gas, diesel or LPG. They range in size from 1" to 6" with volume approaching 100,000 GPH.



Much of the dewatering in the construction field is done with trash pumps, which are designed to pass solids and are more forgiving than centrifugals. Tough, portable 2" and 3" units can deliver up to 400 GPH.



In the mid-size range are units that are a very large 3" or a small 4". These trash and sewage pumps find application as sewage bypass pumps in smaller communities or as medium size dewatering units.



Full size 4" trash and sewage pumps. CPB rated 35MT, are a workhorse for higher volume dewatering or temporary sewage bypass. These units are in broad use by municipalities and the U.S. military.



When you have a big pumping problem, you need a big pump. A favorite as standby units for waste water treatment plants or big city transfer pumps, these 6" sewage and trash units can move up to 95,000 GPH.

Deal with "The Pump People"

At CH&E, all we build are pumps. We build over 400 standard models right here in Milwaukee, Wisconsin. So if you have an application that you'd like to discuss, call the day-to-day experts who really know pumps rather than sales people who just sell pumps.

Quality engineering since 1908

We cut our teeth in the contractor pump business and nothing is harder on pumps than construction site dewatering. Many state and city agencies insist on CH&E pumps, because years of experience have taught them that these reliable pumps are built to last in the field — in the toughest working conditions.

Responsive to customer service and parts needs

Yes, we modify pump units to fit unusual applications or peripheral equipment requests. And, yes, we ship over 95% of parts orders within 24 hours. Both of these services can be offered because we make almost everything we sell — so parts are on hand. At CH&E, our objective is always to please our customers. We work very hard to assure that result.

CH&E DEALER:

CH&E
MANUFACTURING CO., INC.

3849 N. Palmer St., Milwaukee, WI 53212-1292
Ph. 800-236-0666 Fax 414-964-0677
See catalog ad @ www.thomasregister.com
E-mail: sales@chepumps.com